



# **CircleDeveloper 3.0**

## **INSTALLATION GUIDE**

**Global Real Estate Solutions**  
**for**  
**Investment, Development and Budgeting**

OFFICES IN: UK USA CANADA SOUTH AFRICA EAST ASIA ASIA PACIFIC

---

**Circle Software Ltd.** 2/6 Granard Business Centre Bunn's Lane Mill Hill London NW7 2DQ  
**Telephone:** Local 08456 440 440 **International** +44 (0) 20 8906 4059 **Fax:** +44 (0) 20 8959 6079  
**Email:** [info@circlesoftware.com](mailto:info@circlesoftware.com) **Web:** [www.circlesoftware.com](http://www.circlesoftware.com)

# Copyright

Copyright © 1994-2007 Circle Software Limited. All rights reserved.

The contents of this document and associated computer programs are copyright and may not be reproduced or used in any form or by any means without the prior written permission of Circle Software Limited.

# Trademarks and acknowledgements

Circle Software Limited™, CircleDeveloper™ and the Circle logo are trademarks of Circle Software Limited.

Acrobat™ is a trademark of Adobe Systems Incorporated.

# Disclaimer

This manual has been prepared for use by Circle Software Limited personnel, licensees and customers.

Circle Software Limited reserves the right to make changes without notice at any time to this document, and shall not be held legally responsible for any typographical, arithmetic and listing errors.

Build date: 3 May 2007 11:35 am

---

# Table of Contents

## **Chapter 1**

<b>Introduction</b> .....	<b>1</b>
About this manual .....	1
Further documentation about this product .....	1

## **Chapter 2**

<b>Setting Up</b> .....	<b>3</b>
CircleDeveloper system requirements .....	3
Installing the software .....	3
Uninstalling the Software .....	15
Starting CircleDeveloper for the first time .....	15

## **Chapter 3**

<b>Installing CircleDeveloper on a Network</b> .....	<b>17</b>
Summary of installation actions to perform .....	17
Setting up CircleDeveloper on a network fileserver .....	17
Important note about network connections .....	18
Upgrading your server to a new version .....	18

## **Chapter 4**

<b>Activating your Licence</b> .....	<b>19</b>
Activation procedure .....	19

## **Chapter 5**

<b>Licensing</b> .....	<b>25</b>
Upgrading to Web Licensing .....	25
Transferring licences .....	28
Changing the number of modules and/or users on your licence .....	33

## **Chapter 6**

<b>Contact Details</b> .....	<b>37</b>
------------------------------	-----------



---

# CHAPTER 1

## Introduction

Welcome to CircleDeveloper - congratulations for buying the world's premier software for use in the property and real estate development business.

CircleDeveloper contains many options and features, enabling a wide variety of methodologies to be employed as used in the global real estate market.

## About this manual

This booklet is provided as an installation guide to enable you to get CircleDeveloper up and running.

The installation, use and application of the software is subject to the Terms and Conditions set out in the licence agreement, and opening the package constitutes acceptance of these terms.

The licence agreement can be found in the program installation directory after you have performed an installation (PDF file). It is important to note that demonstration versions of the programs may not be used for actual business or financial gain, and the user is deemed to agree that the intended use of the software is for evaluation purposes only.

For further information about licensing, installation and use of the software, please contact Circle Software. See "Contact Details" on page 37.

## Further documentation about this product

In addition to this booklet, you will find full documentation in Acrobat PDF format, which is installed alongside CircleDeveloper in the program folder.

This includes the following documents:

- **CircleDeveloperInstallGuide.pdf** - This installation guide in PDF format.
- **CircleDeveloperStepbyStepGuide.pdf** - This is a simplified user guide to get you started quickly.
- **CircleDeveloperUserManual.pdf** - This is the main user guide, containing in-depth details of CircleDeveloper's functionality. The content of this manual is included in the help system, which you can call up at any time with the F1 key.
- **Calculations Manual.pdf** - This is a guide to the main calculation methods employed in CircleDeveloper.



---

# CHAPTER 2

## Setting Up

The purpose of this chapter is to walk you through the steps of the installation process.

### CircleDeveloper system requirements

Before installing CircleDeveloper, ensure that the following requirements are satisfied:

IBM-compatible PC or laptop with:

- SuperVGA 800 x 600 Colour monitor;
- At least 192 Mb of RAM;
- 400 MHz Pentium III or equivalent (or faster);
- Windows operating systems 98 SE (second edition), Me, NT (with service pack 6), 2000, XP;
- A mouse (essential).

#### Disk Space:

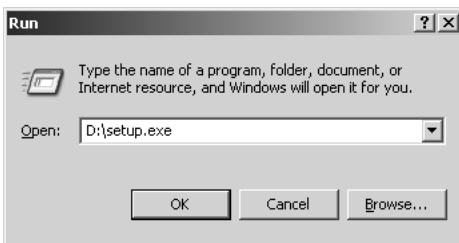
CircleDeveloper requires at least 60 megabytes of hard disk space for program installation.

### Installing the software

Ensure all applications are closed.

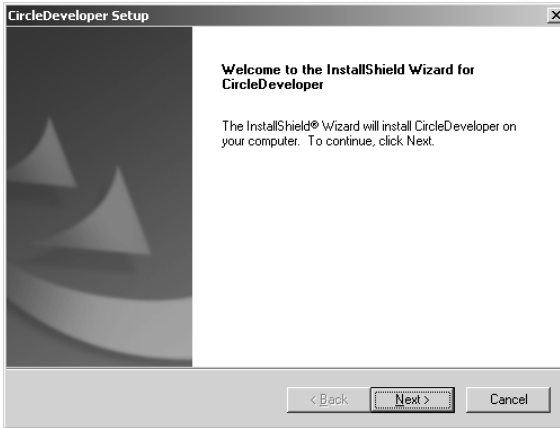
**Note: Before you install CircleDeveloper, you must ensure that you have the appropriate Windows access privileges to install new programs. See your system administrator for details or read the user accounts section of Microsoft’s documentation for your operating system if you are not sure.**

Place the CD in the CD-ROM drive and the installation program should open automatically. If it does not, click the Windows **Start** menu button and click **Run**. Type your CD drive letter + colon + back slash and then type SETUP.EXE. See the example below where “D” is the drive containing the CD:



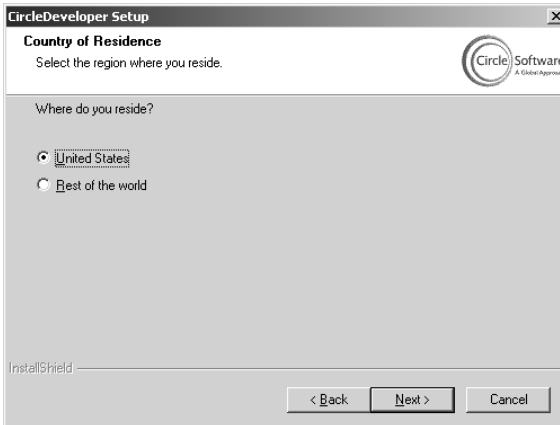
Run dialog

The installation wizard will open and will guide you through the install procedure:



Installation wizard

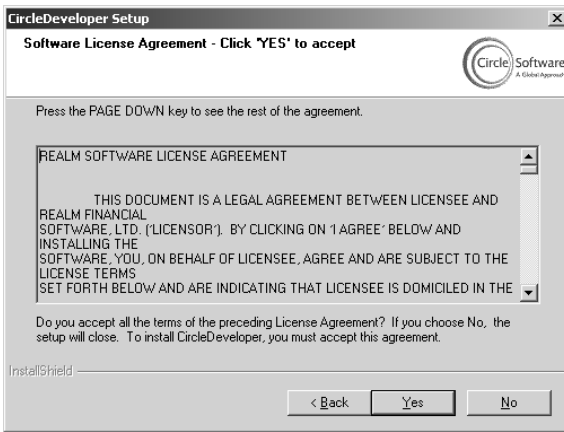
Click on the **Next >** button to proceed. Please wait until you see the following message:



Select your country of residence

Select the appropriate country of residence from the options presented here.

Click on the **Next >** button to proceed. Please wait until you see the following message:

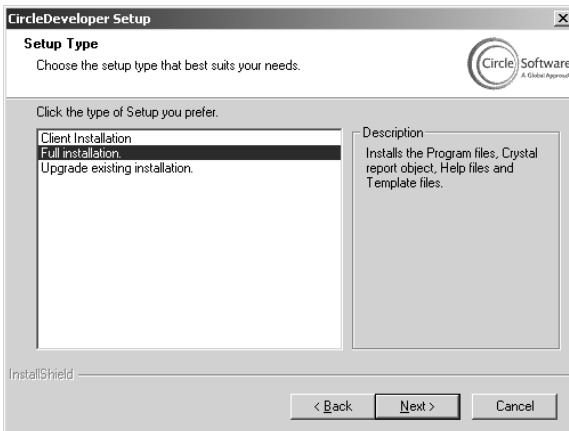


### Software licence agreement

Please read the software licence agreement carefully before you proceed. The example shown above is for a US installation - you may see something different if you are installing a version for a different country.

If you accept the terms of the licence, click on the **Yes** button to proceed.

You will be prompted to choose the type of installation that you require:



### Select the setup type

- **Client installation** – select this option if you are installing a copy that will be used as a client in a multi-user environment where a full installation of the program is on a network server (see also “Installing CircleDeveloper on a Network” on page 17).

**Note that before you start installing any client machines, you must have already done a full installation on a network server - this is so that all clients can be mapped to the server installation.**

- **Full installation** – select this option if you are installing the system for a stand-alone installation, or for an installation that will be used on a network server in a multi-user environment.
- **Upgrade existing installation** – select this option if you wish to upgrade from any version of Developer (2.06 or higher) to version 3.0.

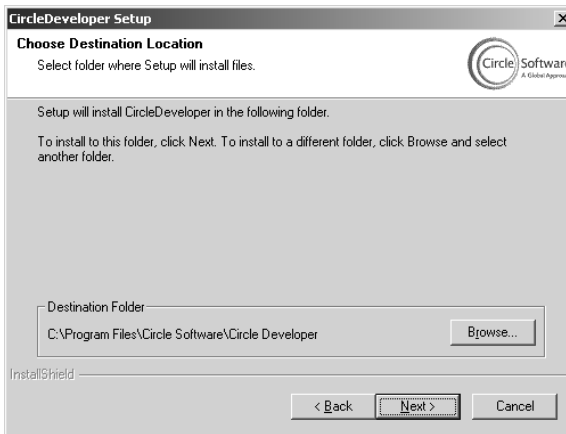
Select the appropriate option from the list and click on the **Next >** button to proceed.

Please see “Client installation” on page 13, “Full installation” on page 6 and “Upgrade installation” on page 9 for further installation details.

## Full installation

If you choose to do a full installation, the procedure will be as follows:

The installation wizard prompts you to enter details of an installation folder for CircleDeveloper:



Enter details of an installation folder

The default set-up directory is:

C:\Program Files\Circle Software\Circle Developer.

Browse to a location where you wish to install CircleDeveloper - you can change the pathname using the **Browse** button.

If you are installing onto a network server (in order to install CircleDeveloper for use in a multi-user environment) use the Browse utility to change this path to the network drive letter and directory in which you want to install CircleDeveloper (for example K:\Circle Developer).

Click on the **Next >** button to proceed.

You will be prompted to review and confirm the installation:

## CircleDeveloper version 3.0 Installation Guide

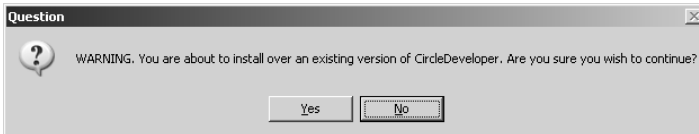


### Review and confirm the installation

The example shown above is for a US version - if you are installing a version for a different country, you will see a different country of residence listed here.

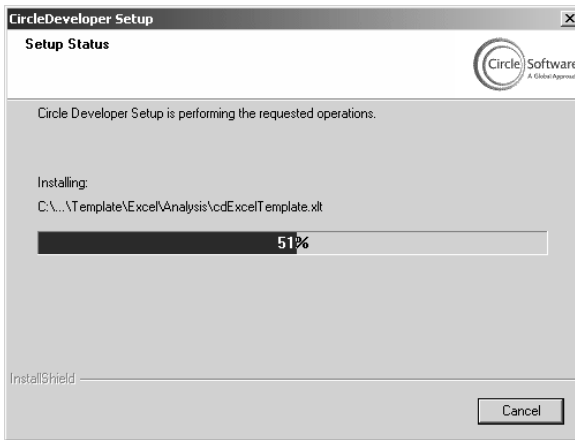
To confirm the installation, click on the **Next >** button to proceed.

If you are attempting to install over an existing installation of CircleDeveloper, you will be warned:

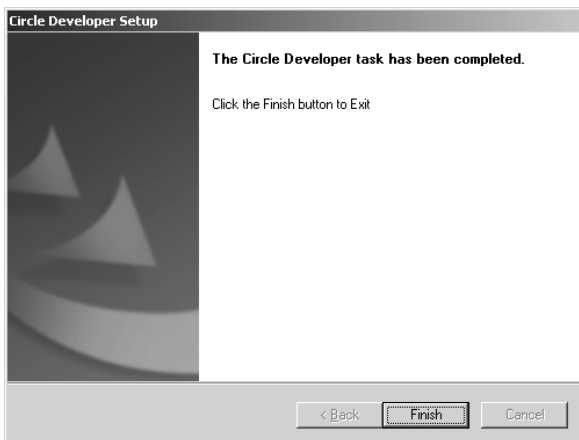


Click on the appropriate button to proceed.

If you click on **Yes**, the installation will commence, and the progress will be displayed:



When the installation has finished, you should see the following message:



Close down the wizard

Click on the **Finish** button to close down the installation wizard.

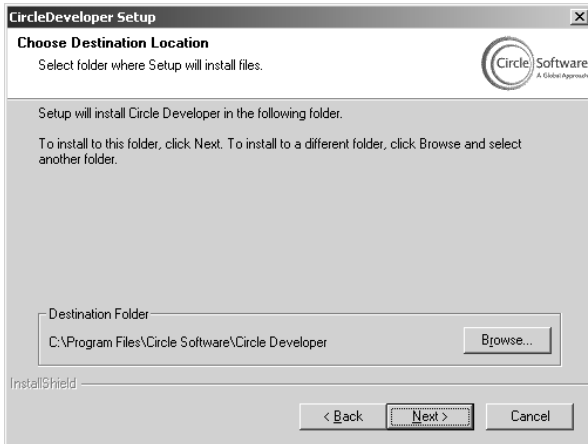
You should now proceed to activate CircleDeveloper. Please see “Activating your Licence” on page 19 for instructions on how to activate your licence.

## Upgrade installation

**Note:** Before you begin an upgrade installation, ensure you have a full backup of the **Data, Report and Template** folders. All users must be logged out of the program before you proceed.

If you choose to do an upgrade installation, the procedure will be as follows:

The installation wizard prompts you to enter details of an installation folder for CircleDeveloper:

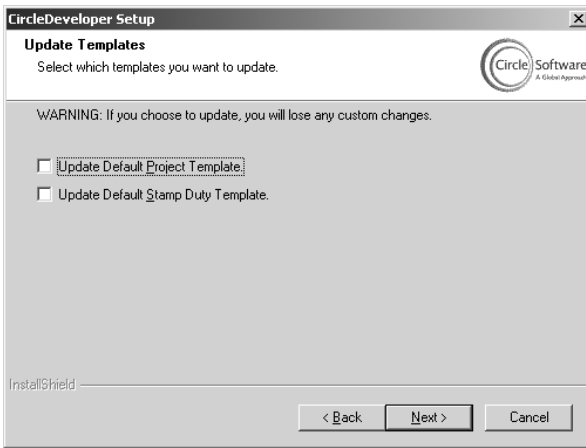


### Enter details of an installation folder

Browse to the location of the CircleDeveloper installation that you wish to upgrade - you can change the pathname using the **Browse** button.

Click on the **Next >** button to proceed.

You will be asked whether you wish to update your current default project template or Stamp Duty template:



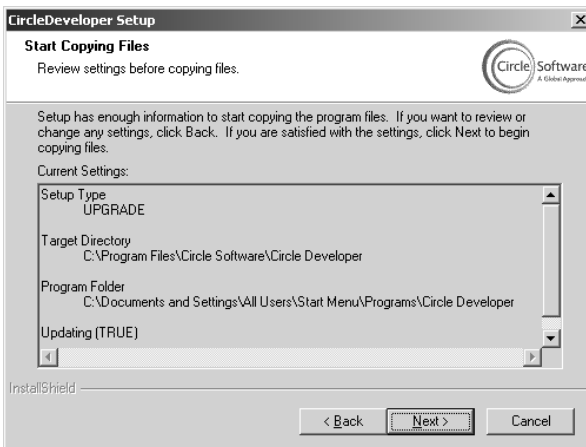
Prompt asking if you wish to update your default templates

**Note: If you have customised your project template by changing default assumptions and/or linking in caveats these will be overwritten if you choose to update the template.**

If you do not select any check boxes, the installation will proceed without updating the templates. If you select either of the check boxes, the appropriate templates will be overwritten.

Click on the **Next >** button to proceed.

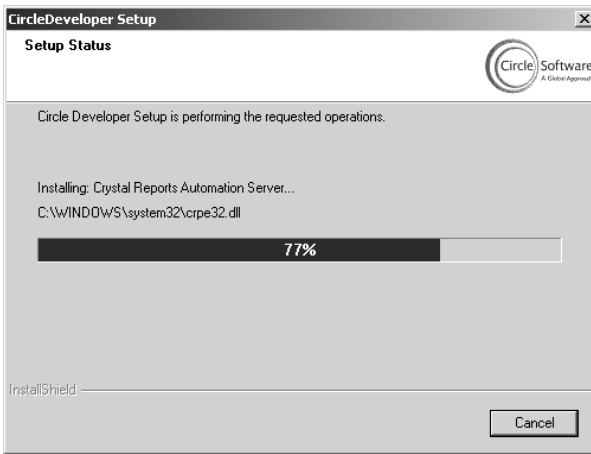
You will be prompted to review and confirm the installation:



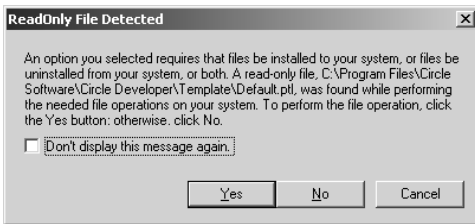
Review and confirm the installation

**CircleDeveloper version 3.0 Installation Guide**

To confirm the installation, click on the **Next >** button to proceed. The installation will commence, and the progress will be displayed:



You **may** be prompted to specify whether or not you wish to overwrite various files (such as templates) that are in your current installation directory.

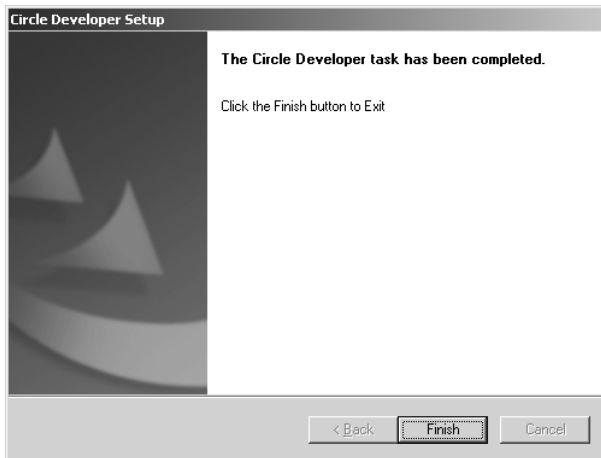


Example prompt for read-only file

**Note:** If you wish to keep these files, click on **No**. Otherwise, if you click on **Yes**, these files will be overwritten.

Click on the appropriate button to proceed.

When the installation has finished, you should see the following message:



Close down the wizard

Click on the **Finish** button to close down the installation wizard.

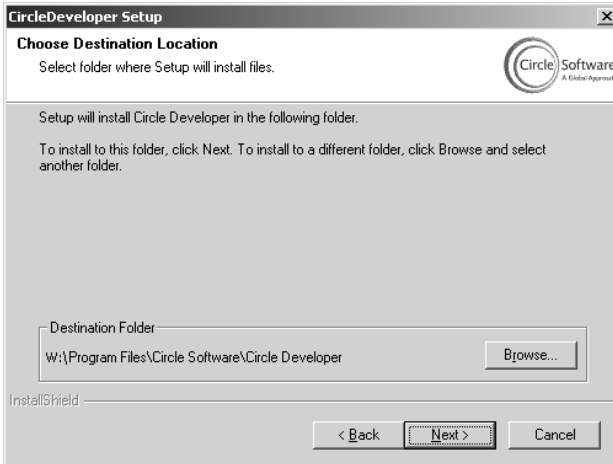
**Note:** You will not need to activate the installation if you have upgraded. The upgrade process does not affect your licence, and when the upgrade installation is complete, you can proceed to use CircleDeveloper immediately.

## Client installation

**Note:** Before you begin, ensure that a full installation of CircleDeveloper has been set up on a network fileserver. This will be the server version of CircleDeveloper to which the client will connect. See “Installing CircleDeveloper on a Network” on page 17 for further details of this procedure.

If you choose to do a client installation, the procedure will be as follows:

The installation wizard prompts you to enter details of an installation folder for CircleDeveloper:

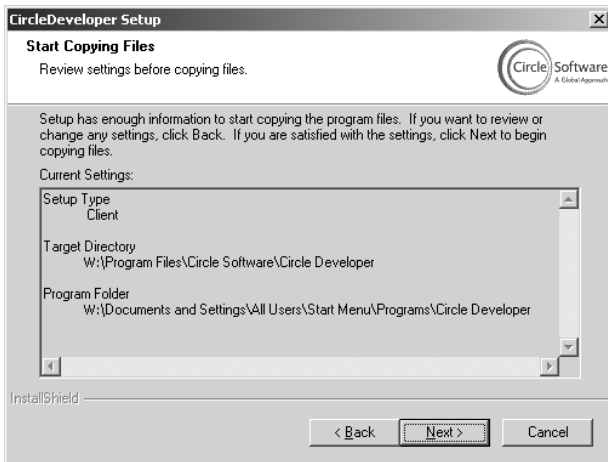


Enter details of an installation folder

Use the **Browse...** button to browse to the filename and path of the CircleDeveloper program installed on the network fileserver. **Please ensure that all client machines that you set up share the same mapped drive letter and path to the server installation.**

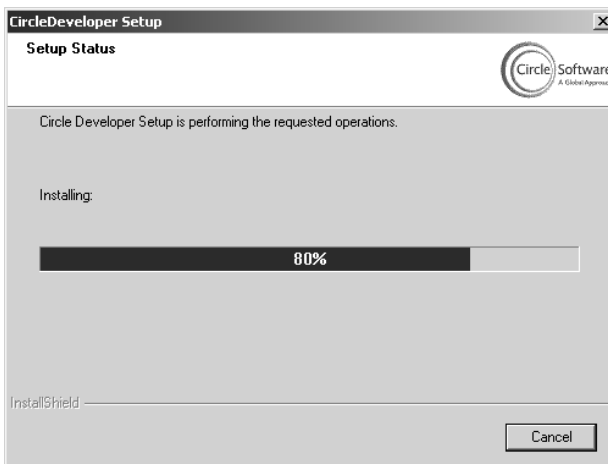
Click on the **Next >** button to proceed.

You will be prompted to review and confirm the installation:

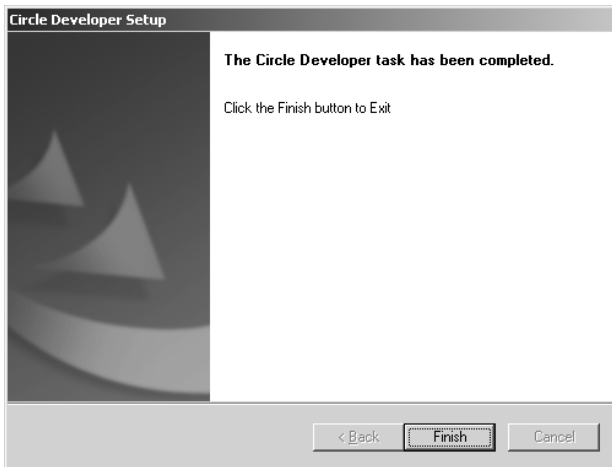


Review and confirm the installation

To confirm the installation, click on the **Next >** button to proceed. The installation will commence, and the progress will be displayed:



When the installation has finished, you should see the following message:



Close down the wizard

Click on the **Finish** button to close down the installation wizard.

If you have not yet activated your installation, you will need to do so now. You should activate the licence from the client machine (see “Activating your Licence” on page 19). To do this, you only need to activate the licence once - any other client installs you set up will then automatically be able to access the fileserver installation.

## Uninstalling the Software

If you need to uninstall the CircleDeveloper software, select **Control Panel | Add/Remove Programs** from the **Start** menu.


Select **CircleDeveloper**.

Click on **Remove** and then click on **Yes**. The software will be uninstalled.

**Note:** The uninstall process will not remove any existing CircleDeveloper data files, template files, stamp duty files or cost code files.

**Warning:** If you want to uninstall a client, you must ensure that the client machine is disconnected from the network - this is a precaution to prevent you from accidentally uninstalling the installation on the server.

## Starting CircleDeveloper for the first time

You can start CircleDeveloper by double-clicking the CircleDeveloper icon on the desktop  or by browsing to the installation folder and double-clicking on `CircleDeveloper.exe`.

When you try to run the program for the first time you will be prompted to enter an activation code. Please see “Activating your Licence” on page 19 for instructions on how to activate your licence.

**Note:** You will find a full user manual and a copy of this installation guide in Acrobat PDF format have been installed alongside CircleDeveloper in the program folder.

---

## CHAPTER 3

# Installing CircleDeveloper on a Network

This section provides additional information that is required if you wish to set up CircleDeveloper for use in a client-server configuration over a network. This information is primarily aimed at network administrators.

Please also refer to the following information:

- The procedure for installing CircleDeveloper is described in “Full installation” on page 6.
- The procedure for upgrading an installation of CircleDeveloper is described in “Upgrade installation” on page 9.
- The procedure for installing a CircleDeveloper client is described in “Client installation” on page 13.

## Summary of installation actions to perform

Setting up CircleDeveloper on workstations is a two-step process:

- **Fileserver installation** - First, complete a full installation of CircleDeveloper onto the fileserver (see “Full installation” on page 6 for further details). Note that the licence should be activated from a client machine.
- **Client installations** - Then, set up each workstation for use as a client by running a client installation (see “Client installation” on page 13 for further details).  
Once you’ve installed a client, you can activate the licence from the client machine (see “Activating your Licence” on page 19). To do this, you only need to activate the licence once - any other client installs you set up on other machines will then automatically be able to access the fileserver installation.

## Setting up CircleDeveloper on a network fileserver

CircleDeveloper has been tested on the following networks:

- Novell Netware 3.1x, 4x and 5x;
- Windows NT v3.5 and v4.0, Windows 2000, 2003 and XP.

Users on networks can share the CircleDeveloper program and data files. Once CircleDeveloper has been installed on the network, a workstation user can connect to the program using the client installation.

Before you set up CircleDeveloper on a fileserver, check the following:

- The network must be operational, and you must have read, write, create, modify and delete privileges for the network directories in which you want to install CircleDeveloper.
- Windows operating system version 98SE/NT/2000/Me/XP must be installed on the workstation from which you will install CircleDeveloper and on any workstations that will run CircleDeveloper.

- You should determine the logical drive letter and network fileserver folder to which CircleDeveloper will be installed (for example, `W:\Program Files\Circle Software\CircleDeveloper`); if you wish to change this, browse to your preferred drive letter and folder on the fileserver.
- Ensure that the program is installed on a drive which can be accessed by all client machines.

## Important note about network connections

Network connections are specified with a logical drive letter, such as F.

Universal Naming Convention (UNC) paths of the form `\\servername\folder` cannot be used to install CircleDeveloper.

When performing the CircleDeveloper installation, if you are installing onto a network server use the Browse feature to change the path to the network drive letter and directory in which you want to install CircleDeveloper (for example `W:\Program Files\Circle Software\CircleDeveloper`).

## Upgrading your server to a new version

If you already have a copy of the CircleDeveloper program on your fileserver and want to upgrade to a later version, you should first perform the following procedure:

- Before commencing an upgrade, please ensure that the installation on the fileserver is not running.
- Close down all client installations that are running.
- Take a backup of the Data folder in the CircleDeveloper installation folder.
- If you have any custom Crystal Reports or custom Templates, take a backup of these before proceeding with the upgrade.

After you have done this, you can perform the upgrade installation as described in “Upgrade installation” on page 9.

# CHAPTER 4

## Activating your Licence

Before you can use your copy of CircleDeveloper, you should have completed a successful installation, and you should now proceed to activate your licence.

Activation is a necessary stage that you must complete in order for your installation of CircleDeveloper to be used. The process takes just a few minutes, and can be done via telephone or an Internet connection.

### Activation procedure

When you try to run the program for the first time (by double-clicking on the CircleDeveloper icon on the Windows desktop), you will be prompted to enter an activation code and serial number. If you do not have your activation code or serial number, please contact your Circle sales representative or the Circle Support line.

**Note: If you are setting up CircleDeveloper for use in a client-server configuration over a network, the licence should be activated from one of the client machines.**

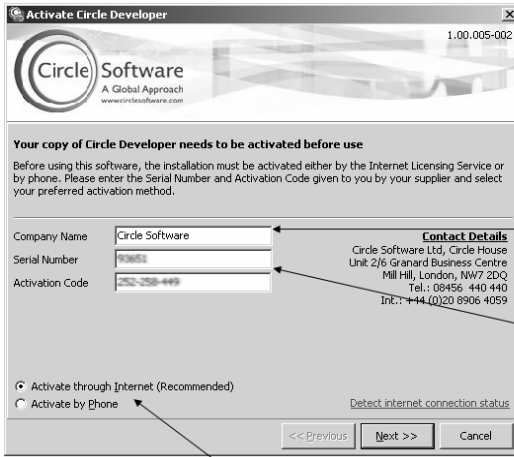
When you launch the program, the following screen will appear:

#### CircleDeveloper activation dialog

Type your company name into the **Company Name** field exactly as it appears in the correspondence from Circle Software.

Enter the **Serial Number** and **Activation Code** into the appropriate fields. Take care to enter these exactly as supplied by Circle Software.

Choose the type of activation you wish to use, by selecting either of the **Activate through Internet** or **Activate by Phone** radio buttons.



Step 1 - Enter Your Company Name.

Step 2 - Enter the Serial Number and Activation Code provided to you by Circle Software.

Step 3 - If you have an Internet connection, select **Activate through Internet**. If you do not have Internet access, select **Activate by Phone**.

Now, proceed with the activation as described in “Activation by Internet” on page 20 or “Activation by phone” on page 22.

### Activation by Internet

To choose this activation method, select the **Activate through Internet** radio button.

If you are not sure whether your PC is currently connected to the Internet, click on the **Detect internet connection status** link.

If you are currently connected, a message similar to the following will be displayed:



Displaying your connection status

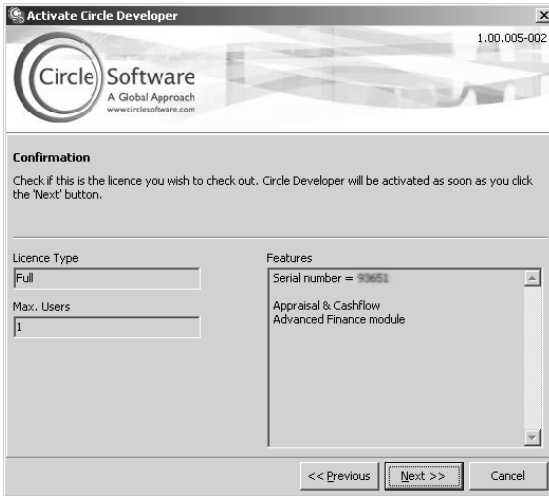
If you are unable to connect to the Internet, you can choose to activate your licence by phone. See “Activation by phone” on page 22 for further details.

Click on the **OK** button to close down the message. You will be returned back to the activation dialog.

Click on the **Next >>** button to proceed.

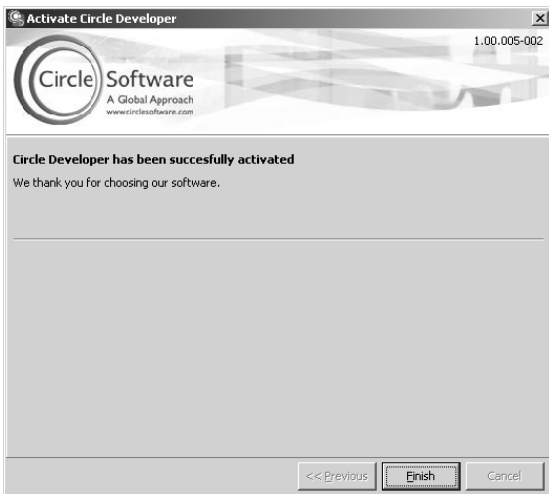
### CircleDeveloper version 3.0 Installation Guide

If you are activating your licence through the Internet, the next page will confirm the details of your licence.



#### Confirmation of licence

Click on the **Next >>** button to activate your licence. You will receive a message to confirm that it has been successfully activated:



#### Successful activation message

Click on the **Finish** button to complete the process. You can now proceed to use CircleDeveloper.

### Activation by phone

Alternatively, if you are activating your licence by telephone, type in your company name, serial number and activation code and select the **Activate by Phone** radio button:

Activate Circle Developer 1.00.005-002

**Circle Software**  
A Global Approach  
www.circlesoftware.com

**Your copy of Circle Developer needs to be activated before use**

Before using this software, the installation must be activated either by the Internet Licensing Service or by phone. Please enter the Serial Number and Activation Code given to you by your supplier and select your preferred activation method.

Company Name: Circle Software  
Serial Number: 90851  
Activation Code: 252-258-449

**Contact Details**  
Circle Software Ltd, Circle House  
Unit 2/6 Granard Business Centre  
Mill Hill, London, NW7 2DQ  
Tel.: 08456 440 440  
Int.: +44 (0)20 8906 4059

Activate through Internet (Recommended)  
 Activate by Phone

[Detect internet connection status](#)

<< Previous Next >> Cancel

### Choosing Activate by Phone

Click on the **Next >>** button to proceed.

The following page will provide information that you will need to give to Circle Support to activate your licence:

**Activate Circle Developer** 1.00.005-002

**Circle Software**  
A Global Approach  
www.circlesoftware.com

**Contact Customer Support**  
When you call Customer Support, the person you speak to will ask for the information below.

Company Name: Circle Software  
 Serial Number: F9851  
 Activation Code: 252-258-449  
 Server name: LONQA001  
 Location on Server: C:\Program Files\Circle Software\Circle Developer006\  
 Product version: 3.0.1.179  
 User Name: DavidW  
 Installation Number: 4625 4057 F987 88E3 0190 984D 12 ?

Email Support:UK@circlesoftware.com    << Previous    Next >>    Cancel

Contact Circle Support and read out this information

To aid you in reading the installation number, you can click on the **?** button.

This displays a small dialog which lists the installation number in words - all you need to do is read this out to Circle Support.

**CircleDeveloper Lic...**

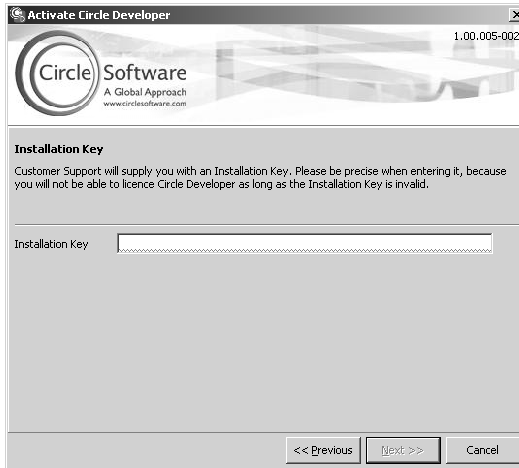
Four One Two Charlie  
 Two Six Two Delta  
 Foxtrot Delta Delta Eight  
 One Eight Six Nine  
 Zero Zero Seven Seven  
 Charlie Zero Six Echo  
 November Zulu

OK

Installation number displayed as words

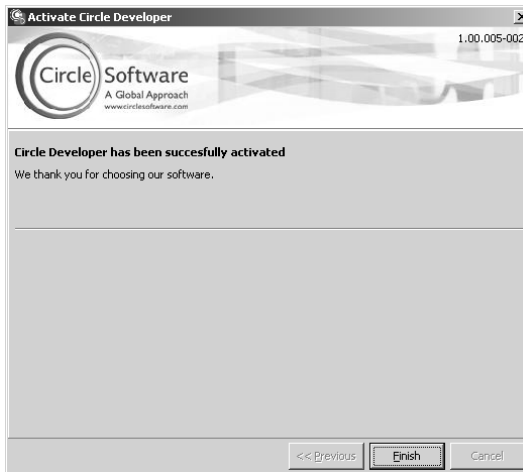
Click on **OK** to close down this dialog, and click on the **Next >>** button to proceed.

You will be prompted to type in an Installation Key:



Type in the Installation Key here

Circle Support will supply you with an Installation Key, which you must enter in the appropriate text box. This is a very long alphanumeric string, so take care when typing it in. Click on the **Next >>** button to activate your licence. You will receive a message to confirm that it has been successfully activated:



Successful activation message

Click on the **Finish** button to complete the process. You can now proceed to use CircleDeveloper.

**CircleDeveloper version 3.0 Installation Guide**

---

# CHAPTER 5

## Licensing

The licences set out which program modules are active and how many users can access the program at any one time.

- Licences are effectively the keys used to activate the programs.
- They cannot be copied or “hacked”.
- Licences **cannot be restored from backup**.
- Licences are delicate and users must follow defined procedures to move licences.
- Corrupted licences cannot be recovered without the assistance of the Circle Support service.

There are two ways of performing licensing:

- **Web licensing** - this method of licensing uses an Internet connection to activate and manage licences. All new installations use the Web licensing
- **CRC licensing** - this method of licensing uses manual licensing methods (via a telephone message). Existing customers can upgrade from CRC licensing to Web licensing.

**Note: Web licensing allows you to activate and manage your licenses quickly and easily. Your product can be activated within minutes, allowing you to get started immediately. All customers are strongly recommended to upgrade to Web licensing.**

Please see “Upgrading to Web Licensing” below for further details.

## Upgrading to Web Licensing

If you are upgrading from an earlier version of the program and currently have CRC licensing, you can upgrade your existing licence to the new Web licensing. **An Internet connection is recommended.**

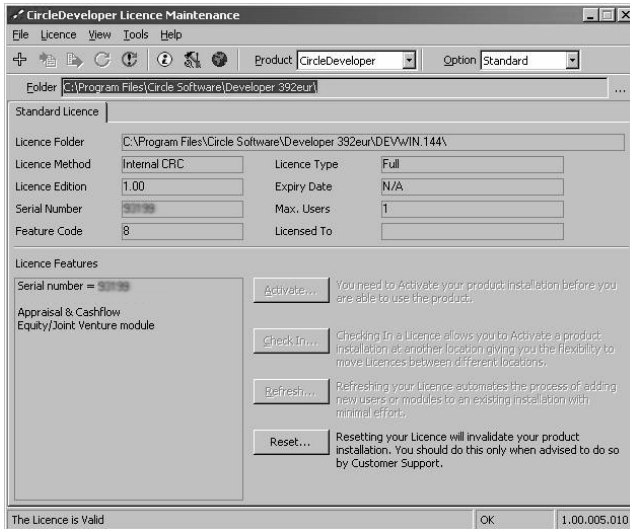
Ensure that all users are logged out of the program before the licence upgrade is attempted.

**Note: If you are upgrading a network multi-user licence, any licences that have been temporarily transferred (for example, onto laptops) must be transferred back onto the server before the licence can be upgraded.**

After you have performed an upgrade installation, to upgrade the licence, browse to the program installation folder and open `Licence.exe`.


**Note: There may also be a file called `License.exe` in the installation folder - ignore this file, it is a remnant of the old program installation. Do not delete this file.**

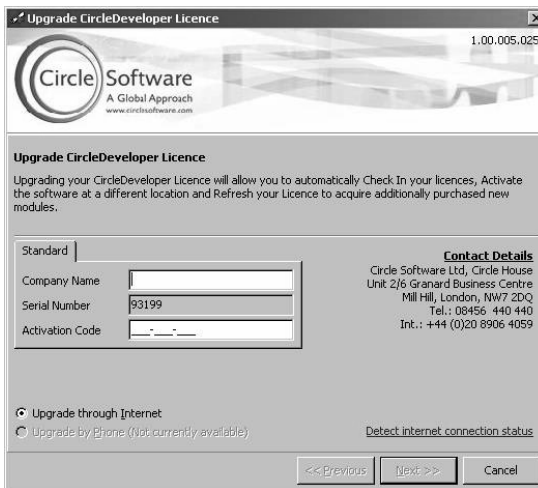
This opens the Licence Maintenance utility:



## Licence maintenance

Note that the Licence Method says “Internal CRC”. If you are upgrading from an earlier version (such as Visual Developer 2.06), the Licence Method may say “Copy Control”.

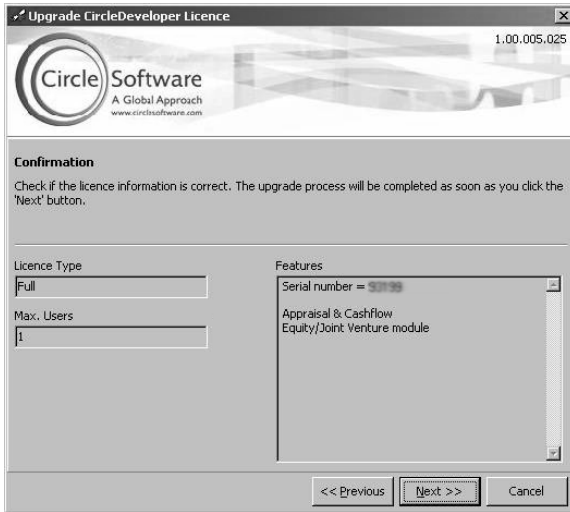
Click on the **Upgrade** button  or select **Upgrade licence...** from the **Tools** menu. This opens the following dialog:



Enter your company name and activation code

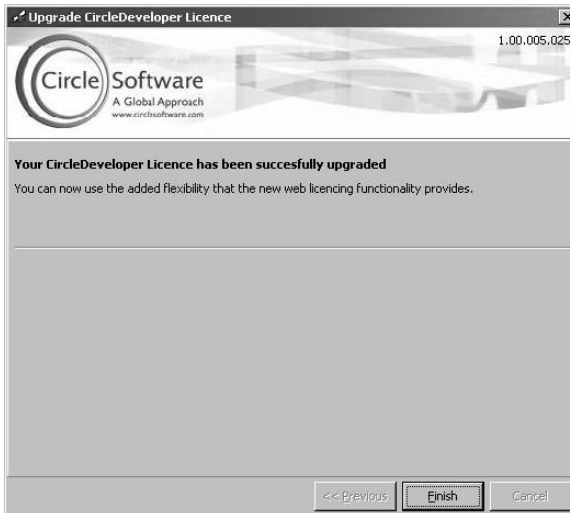
## CircleDeveloper version 3.0 Installation Guide

Contact Circle Software for the company name and activation code. Enter these details exactly as stated, then click on **Next >>**. A confirmation screen will be displayed:



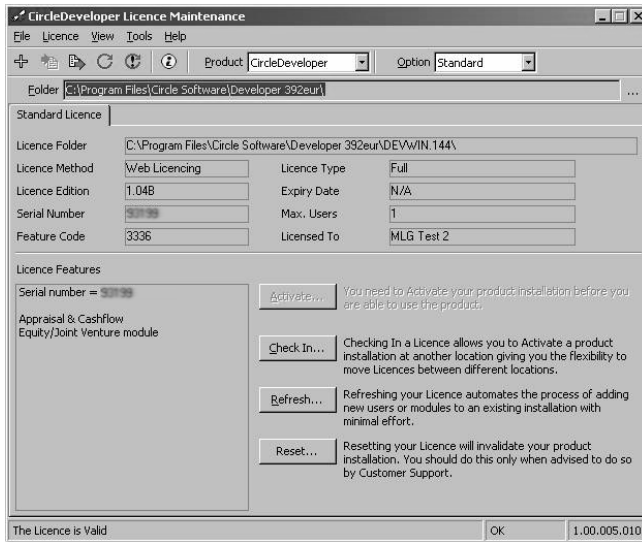
Confirmation of upgrade

Click on **Next >>** to proceed.



Finish message

Click on **Finish** to complete the upgrade of your licence(s) to Web licensing. The Licence Maintenance utility should now look something like the following, with changed settings:



The upgraded Licence Maintenance utility

Note that the Licence Method should now say “Web Licencing”, indicating that the licensing method has been successfully upgraded to Web licensing.

Close down the Licence Maintenance utility.

## Transferring licences

### Transferring with Web licensing

Licences can be moved/transferred between installations by “checking-in” the licence and then “re-activating” to a different installation. **Please note that an Internet connection is required.**

**Note: The laptop or other PC must contain a full installation of the CircleDeveloper program as applicable, before transferring the licence.**

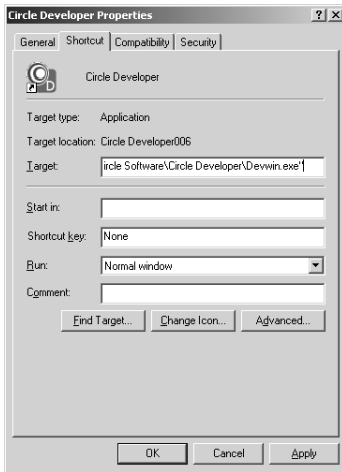
There are two main stages required to move a licence from one PC to another:

- **Checking-in** - see “Checking-in a licence” on page 29;
- **Re-activating** - “Re-activating the licence on a different computer” on page 33.

Open Windows Explorer and browse to the installation folder. If you don’t know where your installation folder is, try right-clicking on the program shortcut on your computer desktop.

### CircleDeveloper version 3.0 Installation Guide

Select the **Properties** menu option. This opens the Properties dialog:



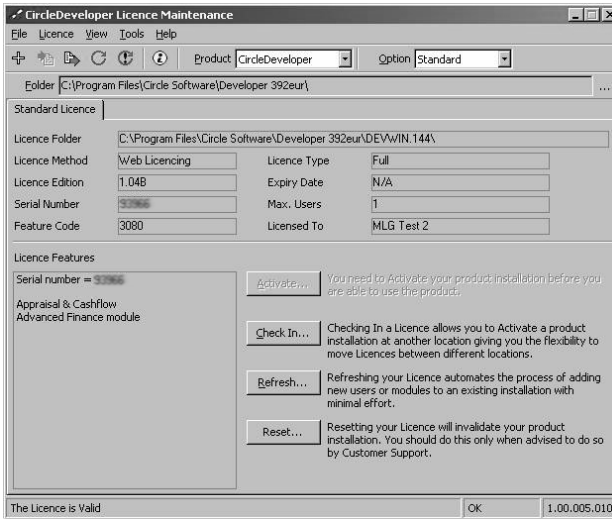
Properties dialog

Click on the **Shortcut** tab. Make a note of the Target. This sets out where the program is installed. Some operating systems provide a **Find Target...** button which automatically opens Windows Explorer to the correct folder.

### Checking-in a licence

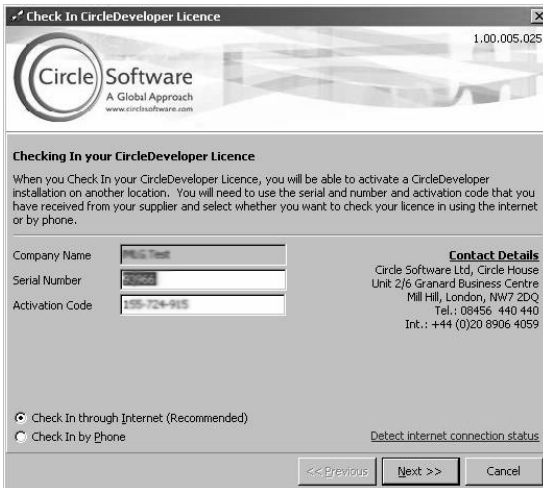
**Note: Before you begin, you must ensure that you have an active Internet connection. Also, you must make a backup of your Data directory if you wish to transfer it to the new computer (this is typically located in the installation folder, for example C:\Program Files\Circle Software\Circle Developer\Data).**

Open `Licence.exe`, then click on the **Check In...** button:



### Licence maintenance program

This displays the licence checking-in dialog:

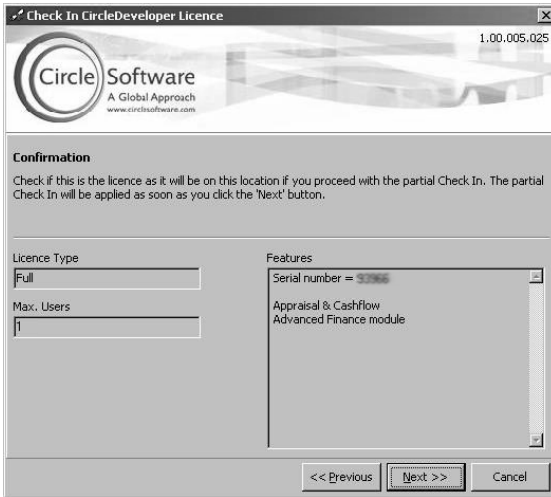


### Check-in dialog

**Note: Make a note of all the information you see in this dialog - you will need it for re-activating your licence on the computer to which you are moving the CircleDeveloper licence. Do not lose this information.**

Select the **Check in through Internet** option, and click on the **Next >>** button (if you are unable to connect to the Internet, you can choose to check in your licence by phone - call Circle Support for guidance).

A confirmation message will be displayed, so you can confirm the check-in operation:



Check-in confirmation message

Click on the **Next >>** button to proceed.

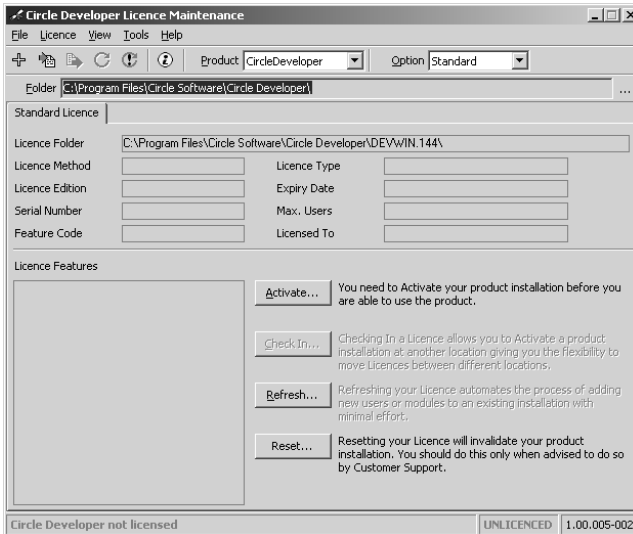
If the check-in was successful, you should see the following message:



### Successful check-in

Click on the **Finish** button to close down the dialog.

When you are returned back to the Licence Maintenance program, it will now show the program as unlicensed:



If you have checked-in a licence in order to license a separate installation (such as on a laptop or a PC at a separate location), you will need to re-activate the licence on that other computer. See the next section, “Re-activating the licence on a different computer”.

### **Re-activating the licence on a different computer**

To re-activate the licence after you have checked it in, you will need to perform a new installation of CircleDeveloper on the computer that you wish to transfer the licence to.

When you have performed the installation according to the instructions detailed in “Full installation” on page 6, you will need to activate the software. To activate the software, follow the procedure as detailed in “Activation procedure” on page 19.

**Note: To successfully conclude the activation process, you will need the Company Name, Serial Number and Activation Code that you noted down when you checked-in your licence. When you go through the activation procedure, you will be prompted to enter this information.**

After you have re-activated the licence, if you wish to, you can transfer the Data directory from your old installation.

On the new installation, rename the “Data” folder to “Default Data”.

From the old installation, copy the “Data” folder (typically in C:\Program Files\Circle Software\Circle Developer\Data) to the new installation of CircleDeveloper.

You may also wish to copy across your files from the “Template” folder and (if you have created any custom Crystal Reports) files from the “Crystal” folder, to the appropriate folders on the new installation.

You can now proceed to use the fresh installation of CircleDeveloper.

## **Changing the number of modules and/or users on your licence**

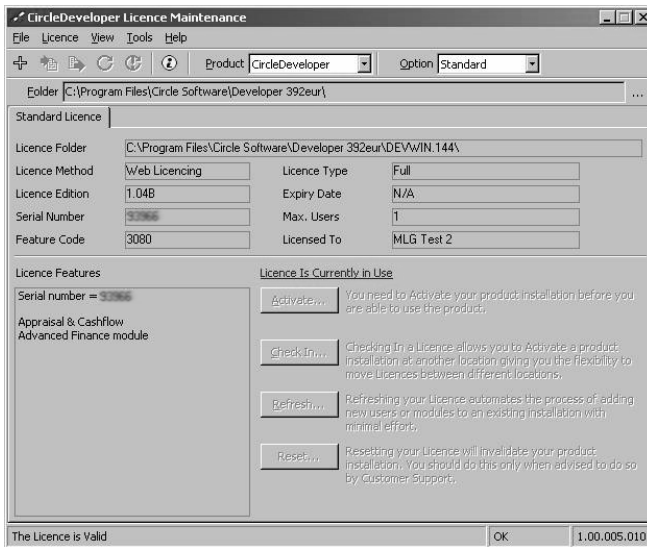
To increase the number of modules or users on your CircleDeveloper licence, you will need to do the following:

**First, you will need to purchase the extra modules or licences from Circle Software.**

Contact Circle Support for the appropriate licence changes to be made. Once you have been advised by Circle that the extra modules or users have been added to your licence, you can proceed.

Before you start, ensure that you have a functioning Internet connection. Also, ensure that all users are logged out. To check that all users are currently logged out, browse to your CircleDeveloper program directory (typically, this is C:\Program Files\Circle Software\Circle Developer) and locate the Licence.exe file.

Double-click on this file to open the licence maintenance program:



Licence Maintenance program showing licence currently in use

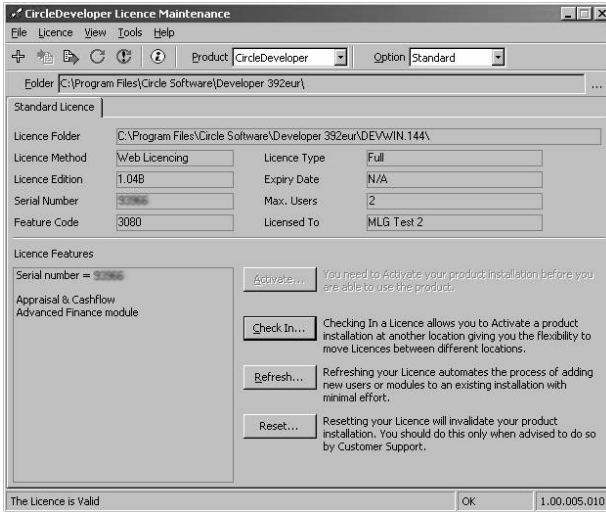
If the Licence Maintenance program looks like this (with the “Licence Is Currently in Use” message displayed), click on the “Licence Is Currently in Use” link to display the list of users:



List of users currently logged in

You will need to contact these users and get them to log out of the application. Close down the Licence Maintenance program. Once all users have logged out, you can proceed.

Open the licence maintenance program again by double-clicking on the `Licence.exe` file:



### Licence maintenance program

Click on the **Refresh...** button to update your licence and add the new module(s) and/or users. You should see the licence details change on the screen. Close down the licence maintenance program.

You can now use CircleDeveloper with the new module and/or user options you have just enabled.

**Note:** If you encounter any problems or errors when performing changes to your licence, you should contact Circle Support (See “Contact Details” on page 37).



---

# CHAPTER 6

## Contact Details

Find us on the Web: <http://www.circlesoftware.com>

### UK contact details:

Circle Software Ltd,  
2/6 Granard Business Centre,  
Bunns Lane,  
Mill Hill,  
London NW7 2DQ,  
UNITED KINGDOM

Tel : +44 (0)20 8906 4059 or 0845 6440 400

Fax: +44 (0)20 8959 6079

**Support email:** [support@circlesoftware.com](mailto:support@circlesoftware.com)

**Info email:** [infouk@circlesoftware.com](mailto:infouk@circlesoftware.com)

### US contact details:

Realm Business Solutions,  
3050 Post Oak Blvd., Suite  
900,  
Houston TX 77056,  
USA

Tel : +1 713-621-4343

Fax: +1 713-621-2787

Support Tel: +1 888-472-1005

**Support email:** [supportusa@circlesoftware.com](mailto:supportusa@circlesoftware.com)

**Info email:** [info@realm.com](mailto:info@realm.com)

Realm Business Solutions,  
13727 Noel Rd., Suite 800,  
Dallas TX 75240,  
USA

Tel : +1 469-791-1000

Fax: +1 469-791-1810

Support Tel: +1 888-472-1005

**Support email:** [supportusa@circlesoftware.com](mailto:supportusa@circlesoftware.com)

**Info email:** [info@realm.com](mailto:info@realm.com)

Realm Business Solutions,  
100 Overlook Center, 2nd  
Floor,  
Princeton NJ 08540,  
USA

Tel : +1 609-375-2169  
Fax: +1 212-202-4084  
Support Tel: +1 888-472-1005

**Support email:** [supportusa@circlesoftware.com](mailto:supportusa@circlesoftware.com)

**Info email:** [info@realm.com](mailto:info@realm.com)

**Canada contact details:**

Circle Software Canada Inc,  
205 - 2773 Barnet Highway,  
Coquitlam, BC,  
V3B 1C2,  
CANADA

Toll-free: 1-888-472-1005  
Tel : +1 604-472-1001  
Fax: +1 604-472-1002

**Support email:** [supportcanada@circlesoftware.com](mailto:supportcanada@circlesoftware.com)

**Info email:** [infocanada@circlesoftware.com](mailto:infocanada@circlesoftware.com)

**Australia and Asia Pacific region contact details:**

Circle Software Asia Pacific  
Pty Ltd,  
Suite 2103, Level 21,  
44 Market Street,  
Sydney NSW 2000,  
AUSTRALIA

Tel : +61 2 9262 1332  
Fax: +61 2 9262 1350

**Support email:** [supportasiapacific@circlesoftware.com](mailto:supportasiapacific@circlesoftware.com)

**Info email:** [infoasiapacific@circlesoftware.com](mailto:infoasiapacific@circlesoftware.com)

**Malaysia and East Asia region contact details:**

Circle Software East Asia Sdn  
Bhd,  
C-06-08, Plaza Mont'Kiara,  
No. 2, Jalan Kiara,  
Mont'Kiara,  
50480 Kuala Lumpur,  
MALAYSIA

Tel : +603 6203 2876  
Fax: +603 6203 1802

**Support email:** [supporteastasia@circlesoftware.com](mailto:supporteastasia@circlesoftware.com)

**Info email:** [infoeastasia@circlesoftware.com](mailto:infoeastasia@circlesoftware.com)

**Singapore region contact details:**

Realm Business Solutions,  
9 Temasek Boulevard,  
#38-02 Suntec Tower Two,  
Singapore 038989

Tel : +65 6332-9778

Fax: +65 6338-7959

**Support email:** [supporteastasia@circlesoftware.com](mailto:supporteastasia@circlesoftware.com)

**Info email:** [info@realm.com](mailto:info@realm.com)

**Japan region contact details:**

Realm Business Solutions,  
1151-10 Tsu Kamakura-shi,  
Kanagawa-ken,  
248-0032,  
Japan

Tel : +81 467-39-1187

Fax: +81 467-39-1186

**Support email:** [supporteastasia@circlesoftware.com](mailto:supporteastasia@circlesoftware.com)

**Info email:** [info@realm.com](mailto:info@realm.com)

**South Africa region contact details:**

ABO Software,  
30 Roeland Square,  
Roeland Street,  
Cape Town 8001,  
SOUTH AFRICA

Toll-free: 080 226 7638

Tel : +27 (0)21 426 2700

Fax: +27 (0)21 426 2708

**Info email:** [info@abosoftware.co.za](mailto:info@abosoftware.co.za)





**Circle Software Ltd,  
Circle House,  
2/6 Granard Business Centre,  
Bunns Lane,  
Mill Hill,  
London NW7 2DQ**

**+44 (0)20 8906 4059**

**[www.circlesoftware.com](http://www.circlesoftware.com)**